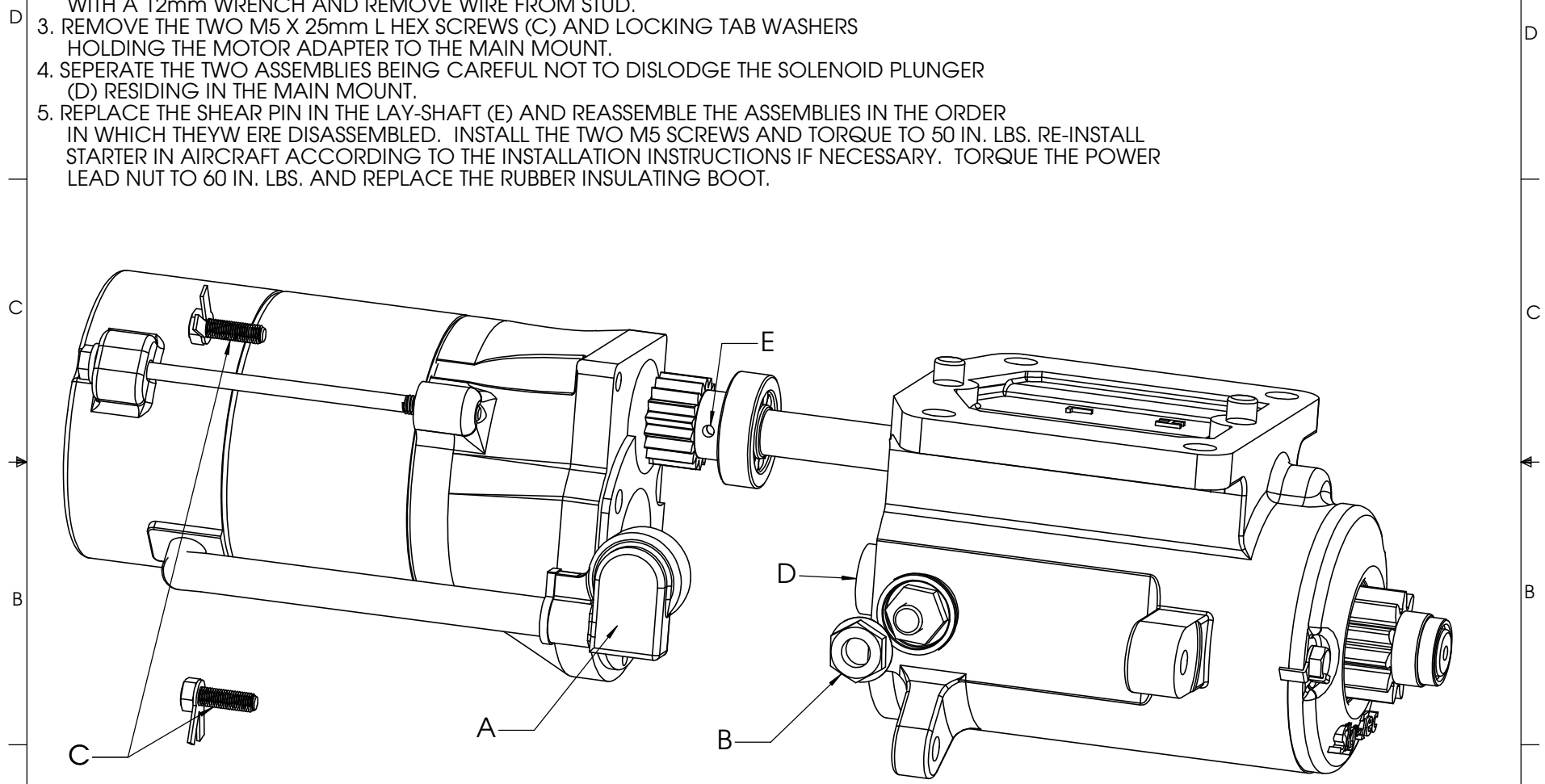


# ACCESSING LAY-SHAFT AND SHEAR PIN

1. REMOVE STARTER FROM AIRCRAFT IF NECESSARY.
2. LIFT THE INSULATING BOOT (A) ON THE MOTOR LEAD, REMOVE M8 LOCKING NUT (B) WITH A 12mm WRENCH AND REMOVE WIRE FROM STUD.
3. REMOVE THE TWO M5 X 25mm L HEX SCREWS (C) AND LOCKING TAB WASHERS HOLDING THE MOTOR ADAPTER TO THE MAIN MOUNT.
4. SEPERATE THE TWO ASSEMBLIES BEING CAREFUL NOT TO DISLodge THE SOLENOID PLUNGER (D) RESIDING IN THE MAIN MOUNT.
5. REPLACE THE SHEAR PIN IN THE LAY-SHAFT (E) AND REASSEMBLE THE ASSEMBLIES IN THE ORDER IN WHICH THEY WERE DISASSEMBLED. INSTALL THE TWO M5 SCREWS AND TORQUE TO 50 IN. LBS. RE-INSTALL STARTER IN AIRCRAFT ACCORDING TO THE INSTALLATION INSTRUCTIONS IF NECESSARY. TORQUE THE POWER LEAD NUT TO 60 IN. LBS. AND REPLACE THE RUBBER INSULATING BOOT.

REVISIONS			
LTR.	DESCRIPTION	DATE	APRV.
A	SCREWS UPDATED TO HEX	11/03/05	GC



\* SOME OLDER MODELS ARE EQUIPPED WITH PHILIPS HEAD SCREWS AND LOCK WASHERS THESE MUST BE REPLACED WITH HEX HEAD SCREWS AND LOCKING TAB WASHERS. CONTACT SKY-TEC FOR REPLACEMENT KIT.

**STANDARD TOLERANCES**  
 ALL DIMENSIONS IN INCHES UNLESS SPECIFIED  
 DECIMALS .XX +/- .030 .XXX +/- .010 ANGLES +/- 1DEG.  
 FRACTIONS +/- 1/16 CONCENTRICITY .005  
 METRIC TOLERANCES .X +/- 0.2 .XX +/- 0.02

<b>Sky-Tec Partners, Ltd.</b> Granbury, Texas		
<b>SHEAR PIN ACCESS</b>		
DRAWN BY:	<b>B. JOWERS</b>	DATE <b>10/30/03</b>
MATERIAL	DWG. NO. <b>25099</b>	REV. <b>A</b>